

UNIVERSITY OF LOUISIANA AT LAFAYETTE

STEP Committee

Technology Fee Application

**Fletcher Hall Gallery Projector and Lighting
Upgrades**

Title

Michael Eble

Name of Submitter
(Faculty or Staff Only)

College of the Arts

Organization

Title: Curator of Exhibitions, Fletcher Hall Gallery Date: 1/14/19
Name (Contact Person): Michael Eble
Address: Fletcher Hall, Rm 207A, PO Box 43663, Lafayette, La 70504-3663
Phone Number: 482-5318 Email: mie6481@louisiana.edu
Department/College/Org: College of the Arts

ABSTRACT (250 words or less):

This proposal seeks \$15,700 for the College of the Arts to purchase two 4K Ultra HD projectors and to replace outdated track lighting within the Fletcher Hall Gallery space. The exhibition space is in need two portable projector to showcase video and new media work from Visual Arts and SOAD (School of Architecture & Design) students, along with visiting artists working within these fields. The track lighting that currently exists in the space was installed in 1984, when the space was first converted into an exhibition space by the College of the Arts and is currently on its last leg. The track lighting is currently obsolete, so parts are no longer available. UL Lafayette campus electricians have advised that the tracks and canisters should be replaced to continue to avoid disruptions in service and maintenance. The exhibition lighting in the Fletcher Hall Gallery space is utilized by the majority students in the School of Architecture & Design and the Department of Visual Arts during their time at UL Lafayette. Thesis exhibitions in this space are built into the curriculum and usually the last hurdle for students graduating from these programs. The gallery also continues to host student exhibitions for undergrads and graduate students in both programs and the department throughout the year. Additionally, the College of the Arts programs continue to use the space for accreditation reviews each year. Having these additions to the space will play a critical role casting both programs in a positive light.

Proposal Description and Narrative:

This proposal seeks \$15,700 for the College of the Arts to purchase two 4K Ultra HD projectors and to replace outdated track lighting within the Fletcher Hall Gallery space. The exhibition space is in need of two portable projectors to showcase video and new media work from Visual Arts and SOAD (School of Architecture & Design) students. The lighting that currently exists in the space was installed in 1984, when the space was first converted into an exhibition space by the College of the Arts. The present lighting track, canisters, and parts are currently obsolete and no longer available. Campus electricians have advised that the tracks and canisters should be replaced to continue to avoid disruptions in service and maintenance.

The addition of the three portable 4K Ultra HD projectors will provide equipment for students to showcase new animation, video and new media works within the gallery. It also will allow students to utilize the space in a more dynamic way. Currently all animation, video and new media work is shown in the same gallery, limiting how student exhibitions can be laid out within the gallery. With the addition of these three projectors, students will be able to show/screen work in the other three galleries within the Fletcher Hall space (see gallery layout). These additions will also allow students to pursue more creative presentations and allow us to invite visiting artists to exhibit in the space who are producing video and new media work. The projectors selected have a portability so that they can be easily moved to several areas within the gallery, without the limitations of having to mount the projectors to the ceiling of the gallery. The gallery is naturally dark and provides a perfect venue for works of this kind. Each gallery has several walls where projected work can be viewed.

The exhibition lighting in the Fletcher Hall Gallery space is utilized by all students in the School of Architecture and the Department of Visual Arts during their time at UL Lafayette. The combination of both programs that are housed in Fletcher Hall is estimated at 500+ students. The gallery continues to host student exhibitions for undergrads and graduate students in both programs and departments throughout the year. Each Fall and Spring 60-80 graduating seniors within the College of the Arts utilize the space to mount senior exhibitions, quality lighting is crucial in making the exhibitions and creative research read and stand out as quality work. Additionally, juried exhibitions take place each year where outside jurors are brought in to review undergraduate and graduate work. Providing the best lighting in these scenarios provides the most positive impact to this creative community that is made up of architects, designers, and artists. Additionally, the exhibition space is being utilized this coming year for accreditations that are pertinent to programs in the Department of Visual Arts and the School of Architecture and Design. The exhibition space is open to the public Mon-Friday during the week, provides an exhibition space that is engaging to the campus community and greater Lafayette.

The projected lifetime of these enhancements should be somewhere between 10-15 years for the projectors, and 20-30 years for the track lighting. Enhancements in lighting technology and LED technology allow for the use of less wattage and put off less heat, which will elongate the lifetime of the track lighting that would be installed.

In the spring of 2016, Michael Eble was hired as Curator Exhibitions and Events for the College of the Arts. One of his main responsibilities is the management of exhibition spaces within the College of the Arts and the Fletcher Hall Gallery. Michael will oversee management of the projectors along with the implementation, operation, and maintenance of this lighting upgrade. He will rely on campus electricians to remove old track lighting and install new tracks and canisters along with new switches for the Fletcher Hall Gallery Space. Michael continues to work on lighting for each exhibition that is mounted in the Fletcher Hall Gallery space.

The following budget contains funding for 3 LG HU80KA 4K Ultra High Definition Laser Smart TV Home Theater Cine-Beam Projectors and 320 ft. of black track lighting, which allows lighting canister to hang in different spaces within the gallery space but also hold the electrical current that provides energy to function each canister light. Projector pricing was gathered from Amazon and B&H Photo and Video. Track lighting prices were gathered from Tech Lighting, which has several showrooms in the Acadiana area. Along with additional labor costs from campus electricians.

Projectors

3 LG HU80KA 4K UHD Laser Smart TV Home Theater Cine-Beam Projector - 2500 Lumens (2018) 3 x \$2500 = **\$7500**

Track Lighting

40 Nuvo Track Lighting Kits (track kits contain 4 ft of track and 3 canister lights)

at \$60 a piece x 40 = **\$2400**

40 Additional Nuvo tracks 4 feet long, with no lights at \$18 a piece x 40 = **\$720**

The items provide bridges for the electrical current between each 4 ft segment of track lighting

75 tracks splicer at \$12 a piece x 75 = **\$900**

12 corners splicers at \$10 a piece x 12 = **\$120**

10 end caps at \$6 a piece x 10 = **\$60**

8 Dimmable switchers at \$75 a piece x 8 = **\$600**

Dimmable switches allow individuals to switch on and off the lighting in the gallery, but also allow individuals to control the amount of lighting in the space.

Budget Proposal

1. Equipment

*320 ft. Nuvo track lighting, lights and parts for Fletcher Hall Gallery
3 new 4K UHD Laser Smart Projectors*

\$11,700

40 Track Lighting Kits (track kits contain 4 ft. of track and 3 canister lights)

at \$60 a piece x 40 = \$2400

40 additional tracks 4 feet long, with no lights at \$18 a piece x 40 = \$720

75 tracks splicer at \$12 a piece x 75 = \$900

12 corners splicers at \$10 a piece x 12 = \$120

10 end caps at \$6 a piece x 10 = \$60

8 Dimmable switchers at \$75 a piece x 8 = \$600

3 LG HU80KA 4K UHD Laser Smart TV Home Theater CineBeam Projector - 2500 Lumens (2018) 3 x \$2500 = \$7500

2. Maintenance

painting touch ups to gallery ceiling after installation

\$1000

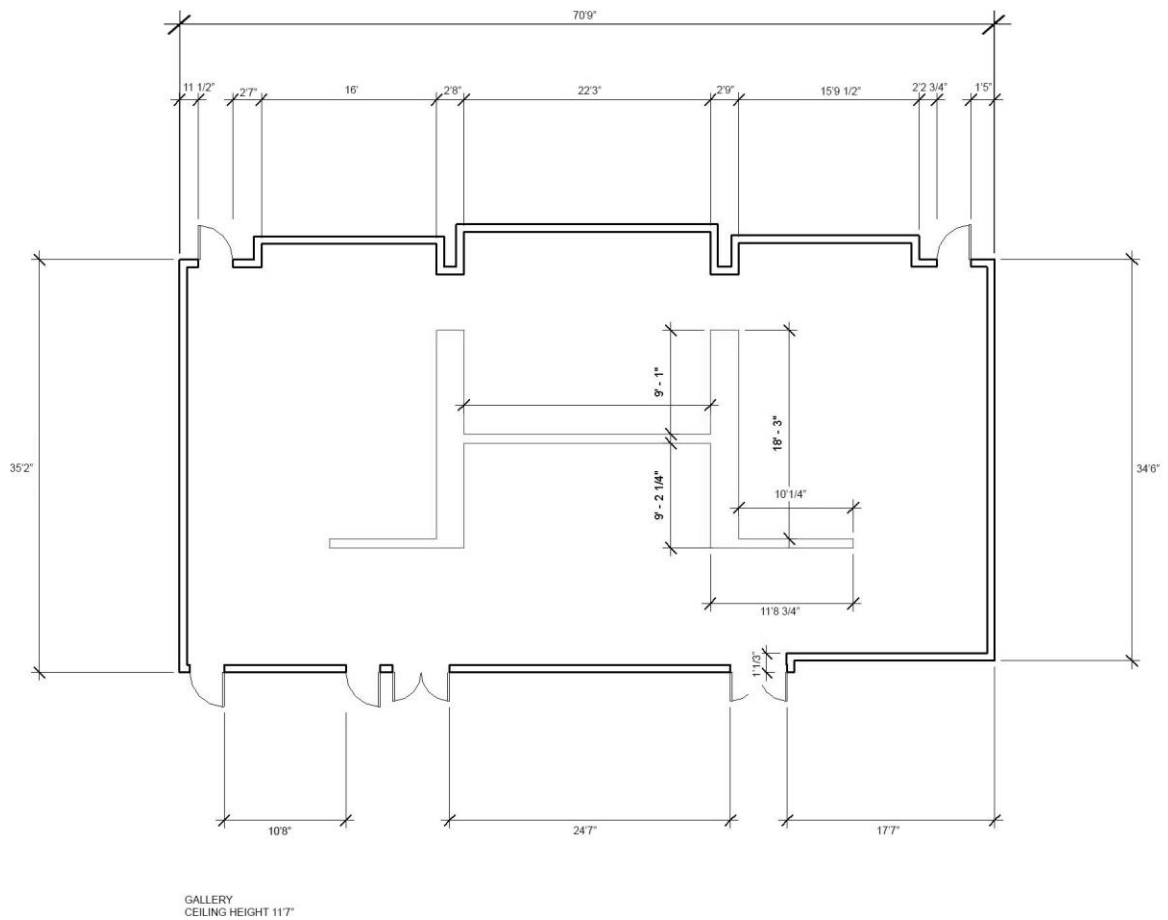
3. Personnel

labor costs for campus electricians

\$3000

TOTAL: \$15,700

Diagram of Fletcher Hall Gallery Space:



Lighting system from 1984

