

UNIVERSITY OF LOUISIANA AT LAFAYETTE

STEP Committee

Technology Fee Application

Fletcher Hall Gallery Lighting Upgrade

Title

Michael Eble

Name of Submitter
(Faculty or Staff Only)

College of the Arts

Organization

Title: Curator of Exhibitions and Events, Date: 7/15/18
Name (Contact Person): Michael Eble
Address: Fletcher Hall, Rm 207A, PO Box 43663, Lafayette, La 70504-3663
Phone Number: 482-5318 Email: mie6481@louisiana.edu
Department/College/Org: College of the Arts

ABSTRACT (250 words or less):

This proposal seeks \$6200 for the College of the Arts to replace outdated track lighting and canisters within the Fletcher Hall Gallery space. The lighting that currently exists in the space was installed in 1984, when the space was first converted into an exhibition space by the College of the Arts. The present lighting track, light canisters, and parts are currently obsolete and no longer available. UL Lafayette campus electricians have advised that the tracks and canisters should be replaced to continue to avoid disruptions in service and maintenance. The exhibition lighting in the Fletcher Hall Gallery space is utilized by all students in the School of Architecture and the Department of Visual Arts during their time at UL Lafayette. The gallery continues to host student exhibitions for undergrads and graduate students in both programs and department throughout the year. Additionally, the College of the Arts will be going through a NASAD accreditation review this coming Spring where exhibition spaces will play a critical role.

Proposal Description and Narrative:

This proposal seeks \$6200 for the College of the Arts to replace outdated track lighting and canisters within the Fletcher Hall Gallery space. The lighting that currently exists in the space was installed in 1984, when the space was first converted into an exhibition space by the College of the Arts. The present lighting track, canisters, and parts are currently obsolete and no longer available. Campus electricians have advised that the tracks and canisters should be replaced to continue to avoid disruptions in service and maintenance.

The exhibition lighting in the Fletcher Hall Gallery space is utilized by all students in the School of Architecture and the Department of Visual Arts during their time at UL Lafayette. The combination of both programs that are housed in Fletcher Hall is estimated at 500+ students. The gallery continues to host student exhibitions for undergrads and graduate students in both programs and department throughout the year. Each Fall and Spring 60 -80 graduating seniors within the College of the Arts utilize the space to mount senior exhibitions, quality lighting is crucial in making the exhibitions and creative research read and stand out as quality work. Additionally, juried exhibitions take place each year where outside jurors are brought in to review undergraduate and graduate work. Providing the best lighting in these scenarios provide the most positive impact to this creative community that is made up of architects, designers, and artists. Additionally, the exhibition space is being utilized this coming year for accreditations that are pertinent to programs in the Department of Visual Arts and the School of Architecture and Design. The exhibition space is open to the public Mon-Friday during the week, provides an exhibition space that is engaging to the campus community and greater Lafayette.

The projected lifetime of this enhancement should be somewhere between 30-40 years, with the enhancements in lighting technology that has occurred over the past 10 years, advancements in LED technology. The LED lamps/bulbs that are now being utilized use less wattage and put off less heat which will elongate the lifetime of the track lighting that would be installed.

In the spring of 2016, Michael Eble was hired as Curator Exhibitions and Events for the College of the Arts. One of his main responsibilities is the management of exhibition spaces within the College of the Arts and the Fletcher Hall Gallery. Michael will oversee the implementation, operation, and maintenance of this lighting upgrade. He will rely on campus electricians to remove old track lighting and install new tracks and canisters along with new switches for the Gallery Space. Michael continues to work on lighting for each exhibition that is mounted in the Fletcher Hall Gallery space.

The following budget contains funding for 320 ft. black track lighting, which allow lighting canister to hang in different spaces within the gallery space but also hold the electrical current that provides energy to function each canister light. These prices were gathered from Tech Lighting, which has several showrooms in the Acadiana area. Along with additional labor costs from campus electricians.

40 Nuvo Track Lighting Kits (track kits contain 4 ft of track and 3 canister lights)

at \$60 a piece x 40 = **\$2400**

40 Additional Nuvo tracks 4 feet long, with no lights at \$18 a piece x 40 = **\$720**

The items provide bridges for the electrical current between each 4 foot segment of track lighting

75 tracks splicer at \$12 a piece x 75 = **\$900**

12 corners splicers at \$10 a piece x 12 = **\$120**

10 end caps at \$6 a piece x 10 = **\$60**

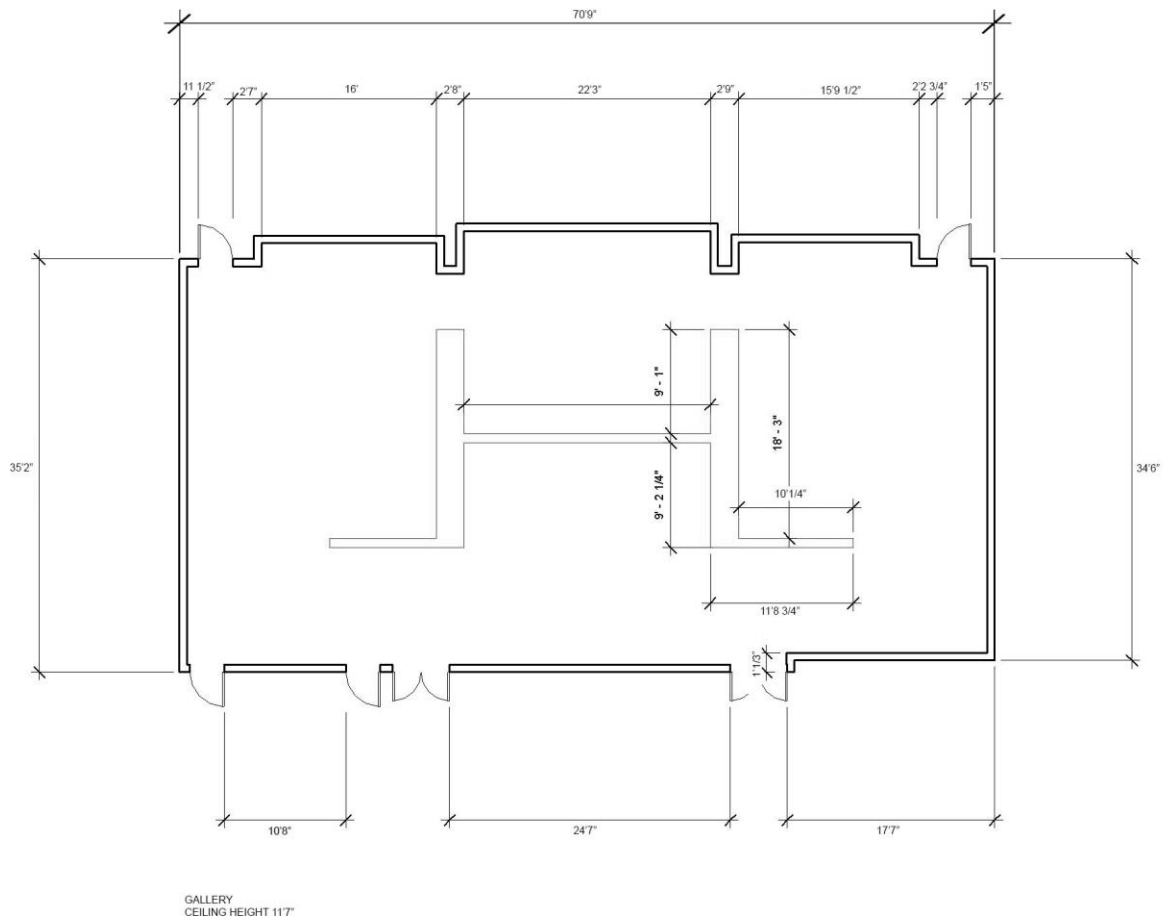
8 Dimmable switchers at \$75 a piece x 8 = **\$600**

Dimmable switches allow individuals to switch on and off the lighting in the gallery, but also allow individuals to control the amount of lighting in the space.

Budget Proposal

1.	Equipment		
	<i>320 ft. Nuvo track lighting, lights and parts for Fletcher Hall Gallery</i>		\$4200
	40 Track Lighting Kits (track kits contain 4 ft. of track and 3 canister lights) at \$60 a piece x 40 = \$2400		
	40 additional tracks 4 feet long, with no lights at \$18 a piece x 40 = \$720		
	75 tracks splicer at \$12 a piece x 75 = \$900		
	12 corners splicers at \$10 a piece x 12 = \$120		
	10 end caps at \$6 a piece x 10 = \$60		
	8 Dimmable switchers at \$75 a piece x 8 = \$600		
2.	Software	\$0.00	
3.	Supplies	\$0.00	
4.	Maintenance	\$0.00	
5.	Personnel	labor costs for campus electricians	\$2000
6.	Other	\$0.00	
TOTAL:		\$6200	

Diagram of Fletcher Hall Gallery Space:



Lighting system from 1984

